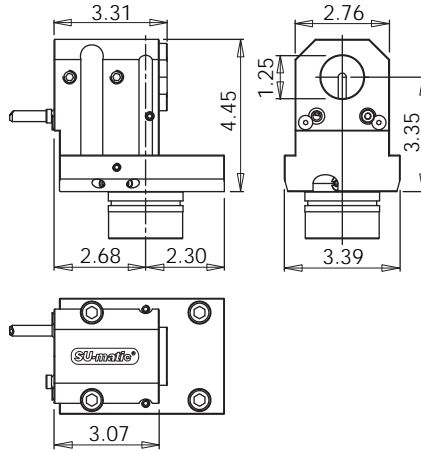
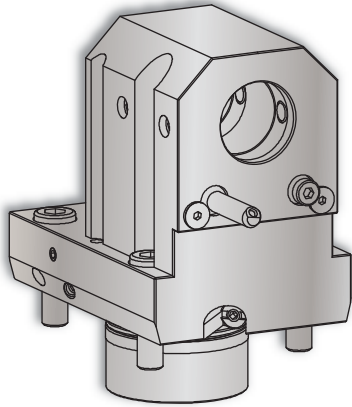


# VELOCITY TOOLING FOR OKUMA LT2000 M/MY

## Static Tools



### LT2000 Boring Bar Holder



### Notes

*VELOCITY/SU-matic* ID holders can be used with both internal and external coolant.

**Internal Coolant Plates** are included with all *VELOCITY/SU-matic* multitasking turret ID holders.

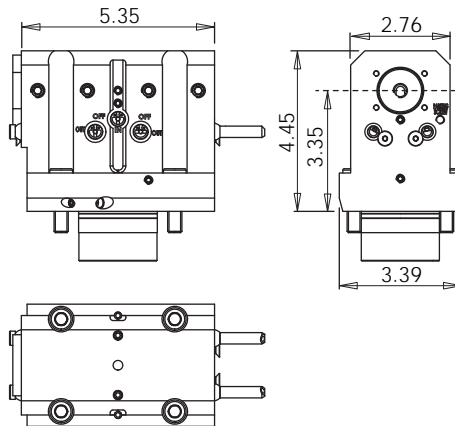
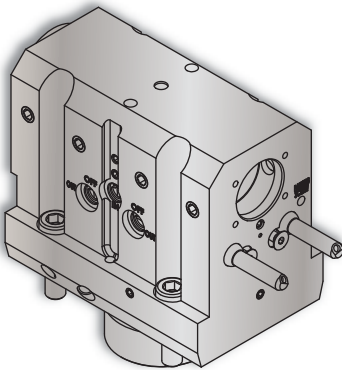
Turret Plugs 14.430.0.0088.0

*VELOCITY/SU-matic* tooling for OKUMA is manufactured on OKUMA machine tools.

Coolant filtration is recommended when using ID holders with internal coolant plates.

Lathe Model	Tool #	Reversible (Main/Sub)	Coolant	ID	Height	Depth (Top)
LT2000	14.910.0.0128.0	Yes	IC/EXT	1.25"	4.45"	3.31"

### LT2000 Boring Bar Holder • Left / Right Spindles



### Notes

*VELOCITY/SU-matic* ID holders can be used with both internal and external coolant.

**Internal Coolant Plates** are included with all *VELOCITY/SU-matic* multitasking turret ID holders.

Turret Plugs 14.430.0.0088.0

*VELOCITY/SU-matic* tooling for OKUMA is manufactured on OKUMA machine tools.

Coolant filtration is recommended when using ID holders with internal coolant plates.

Lathe Model	Tool #	Reversible (Main/Sub)	Coolant	ID	Height	Depth
LT2000	14.910.0.0127.2	-	IC/EXT	1.25"	4.45"	5.35"