

December 2019

ONLY FOR
OKUMA

VELOCITY

SU-matic®

"L" Turret Holders

www.velocityproducts.com



A Complete Lineup of In-Stock Lathe Tooling for Okuma • Three Year Warranty

VELOCITY TOOLING FOR OKUMA "L" TURRET LATHES

VELOCITY **SU-matic**[®]

Velocity Tooling: Only for Okuma

Velocity Products has the largest inventory of lathe tooling for **Okuma** in North America. Velocity is the OEM supplier of tooling startup kits for **Okuma** lathes. Velocity tooling is designed and manufactured by SU-matic – a worldwide leader in tooling technology headquartered in Switzerland. SU-matic has several **Okuma** machine tools in their manufacturing facility. SU-matic works closely with engineers from **Okuma America**, **Okuma Japan**, and **Okuma Europe** when designing tools. This engineering collaboration ensures flawless tooling performance on **Okuma** lathes, multitasking machines, and machining centers. Velocity/SU-matic tooling is available **Only for Okuma** machine tools.

Velocity Tooling Technology

Velocity tools are delivered ready to use; all live tools are run-in at the factory and internal coolant tools are pressure tested as a final quality check prior to shipment. Velocity tools are greased for life; no customer maintenance is required. Velocity/SU-matic tools are CMM inspected and serialized records are kept on file.

Three Year Warranty

Velocity/SU-matic Tooling is designed to give years of service under the most demanding applications. The build quality of our tool holders allows us to back them with an **UNMATCHED Three Year Factory Warranty**.



VELOCITY **SU-matic**[®]
VELOCITYPRODUCTS.COM



Contents

| | |
|---|---|
| GENOS L250 • GENOS L2000L OD-I HOLDER | 3 |
| GENOS L400 • GENOS L3000L OD-I HOLDER | 3 |
| LB/LU 3000L • LB/LU4000L • MULTUS L/C OD-I HOLDER | 3 |
| GENOS L250 • GENOS L2000L OD-II HOLDER | 4 |
| LB/LU 3000L • LB/LU4000L • GENOS L400/L3000L OD-II HOLDER | 4 |
| MULTUS L/C OD-II HOLDER | 4 |
| GENOS L250 • GENOS L2000L ID HOLDER | 5 |
| LB/LU 3000L • GENOS L400/L3000L ID HOLDER | 5 |
| LB/LU 4000 ID HOLDERS | 5 |
| MULTUS L/C ID HOLDER | 6 |

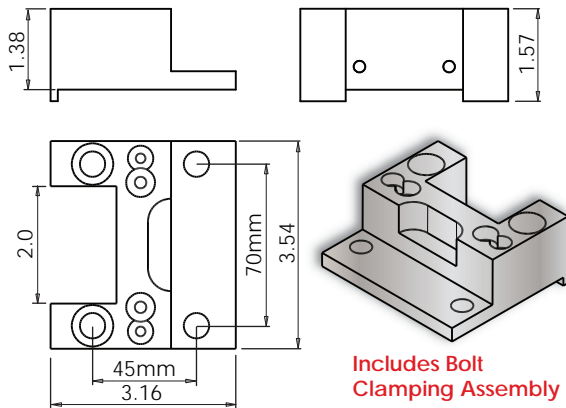


VELOCITY TOOLING FOR OKUMA "L" TURRET LATHES

"L" Turret Holders

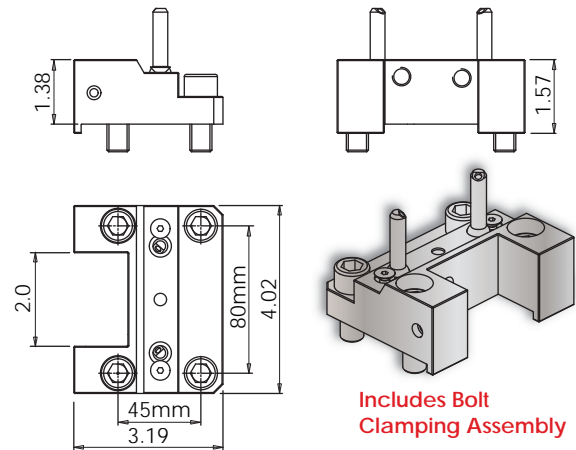


OD-I Holder: GENOS L250 • GENOS L2000L



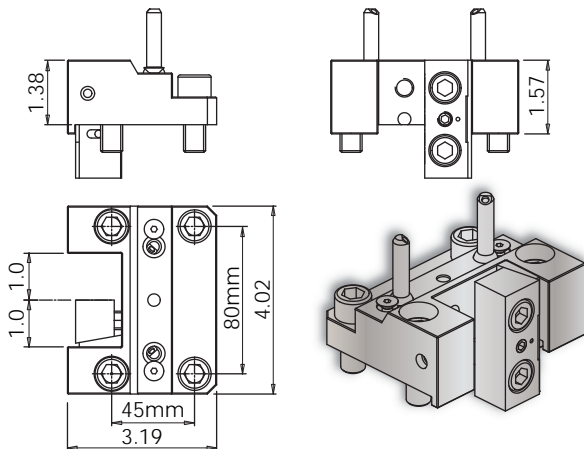
| Tool # | Reversible | Coolant | Stick Size (Inches) | Mounting Bolt Centers |
|---------------|------------|----------|---------------------|-----------------------|
| L250-OD-I-B-V | No | External | 1.0 | 45mm x 70mm |

OD-I Holder: GENOS L400 • GENOS L3000L Multus U3000/U4000/U5000 L/C Tailstock Machine



| Tool # | Reversible | Coolant | Stick Size (Inches) | Mounting Bolt Centers |
|-----------------|------------|----------|---------------------|-----------------------|
| 14.910.0.0282.B | No | External | 1.0 | 45mm x 80mm |

OD-I Holder: LB/LU3000 L • LB/LU4000 L



| Tool # | Reversible | Coolant | Stick Size (Inches) | Mounting Bolt Centers |
|-----------------|------------|----------|---------------------|-----------------------|
| 14.910.0.0282.0 | No | External | 1.0 | 45mm x 80mm |

Notes

All GENOS machines use bolt style clamping slotted turrets. Wedge style clamping OD-I tool holders cannot be used on GENOS machines.

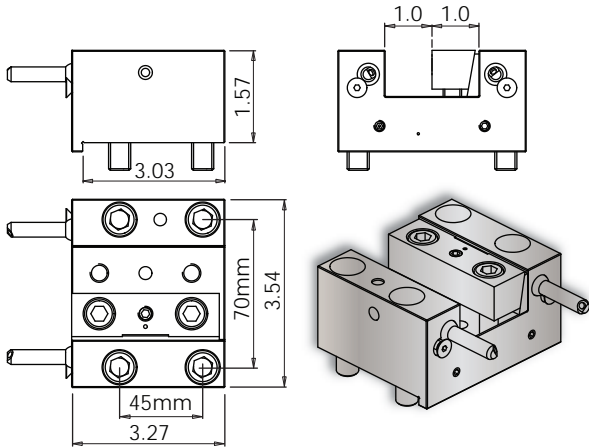


VELOCITY TOOLING FOR OKUMA "L" TURRET LATHES

"L" Turret Holders

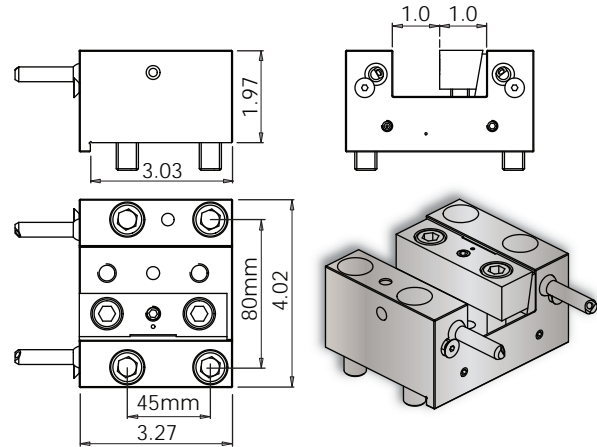


OD-II Holder: GENOS L250 • GENOS L2000L



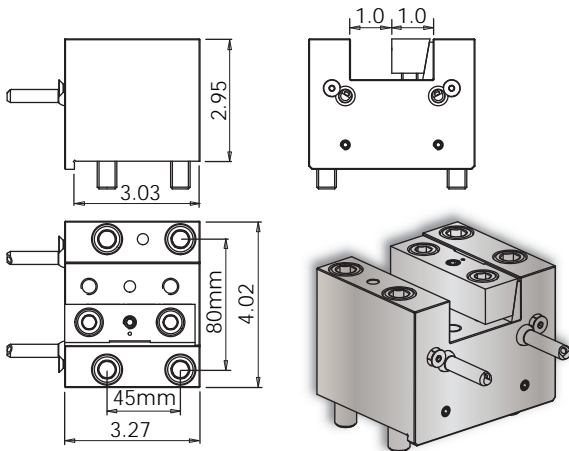
| Tool # | Reversible | Coolant | Stick Size (Inches) | Mounting Bolt Centers |
|-------------|------------|----------|---------------------|-----------------------|
| LB9/10-8411 | No | External | 1.0 | 45mm x 70mm |

OD-II Holder: LB/LU3000 L • LB/LU4000 L • GENOS L3000 L / L400



| Tool # | Reversible | Coolant | Stick Size (Inches) | Mounting Bolt Centers |
|-----------------|------------|----------|---------------------|-----------------------|
| 14.910.0.0283.0 | No | External | 1.0 | 45mm x 80mm |

OD-II Holder: Multus U3000/U4000/U5000 L/C Tailstock Machine



| Tool # | Reversible | Coolant | Stick Size (Inches) | Mounting Bolt Centers |
|-----------------|------------|----------|---------------------|-----------------------|
| 14.910.0.0428.0 | No | External | 1.0 | 45mm x 80mm |

Notes

All GENOS machines use bolt style clamping slotted turrets. Wedge style clamping OD-I tool holders cannot be used on GENOS machines.

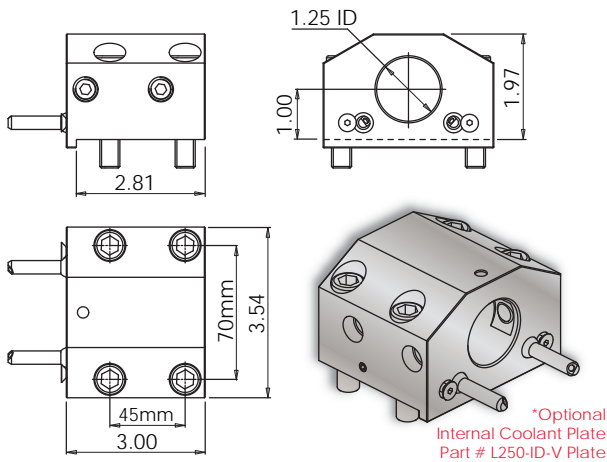


VELOCITY TOOLING FOR OKUMA "L" TURRET LATHES

"L" Turret Holders

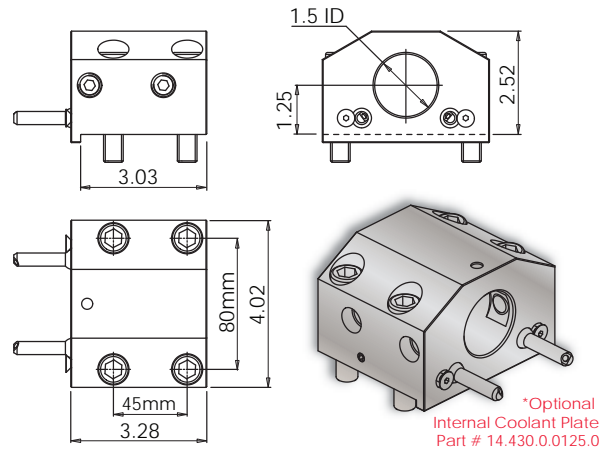


1.25" ID Holder: GENOS L250 • GENOS L2000L



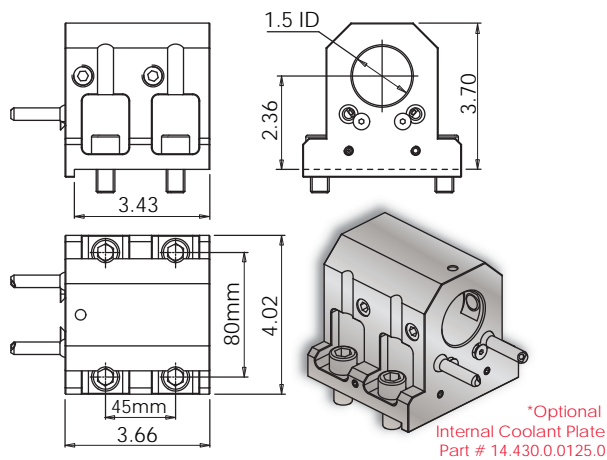
| Tool # | Reversible | Coolant | ID (Inches) | Mounting Bolt Centers |
|-----------|------------|-------------------------|-------------|-----------------------|
| L250-ID-V | No | External (IC Optional)* | 1.25 | 45mm x 70mm |

1.5" ID Holder: LB3000 L • LU3000 L • GENOS L3000 L / L400



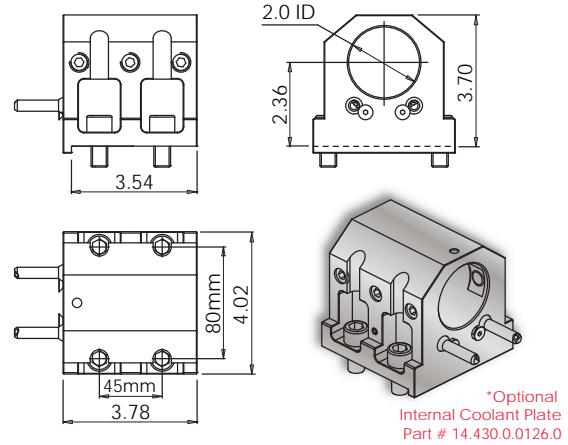
| Tool # | Reversible | Coolant | ID (Inches) | Mounting Bolt Centers |
|-----------------|------------|-------------------------|-------------|-----------------------|
| 14.910.0.0281.1 | No | External (IC Optional)* | 1.5 | 45mm x 80mm |

1.5" ID Holder: LB4000 L • LU4000 L



| Tool # | Reversible | Coolant | ID (Inches) | Mounting Bolt Centers |
|-----------------|------------|-------------------------|-------------|-----------------------|
| 14.910.0.0284.0 | No | External (IC Optional)* | 1.5 | 45mm x 80mm |

2" ID Holder: LB4000 L • LU4000 L



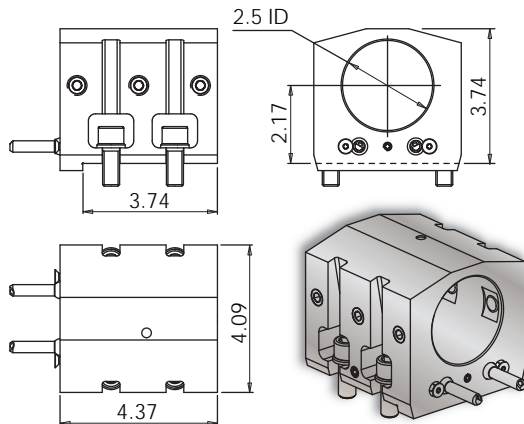
| Tool # | Reversible | Coolant | ID (Inches) | Mounting Bolt Centers |
|-----------------|------------|-------------------------|-------------|-----------------------|
| 14.910.0.0289.0 | No | External (IC Optional)* | 2.0 | 45mm x 80mm |

VELOCITY TOOLING FOR OKUMA "L" TURRET LATHES

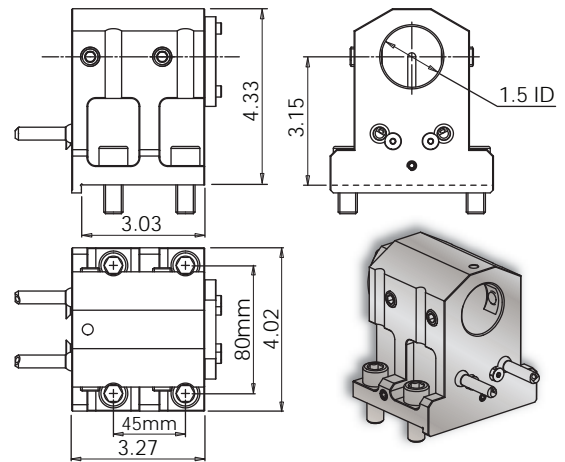
"L" Turret Holders



2.5" ID Holder:
LB4000 L • LU4000 L



1.5" ID Holder:
Multus U3000/U4000/U5000 L/C Tailstock Machine



| Tool # | Reversible | Coolant | ID (Inches) | Mounting Bolt Centers |
|-----------------|------------|----------|-------------|-----------------------|
| 14.910.0.0411.0 | No | External | 2.5 | 45mm x 80mm |

| Tool # | Reversible | Coolant | ID (Inches) | Mounting Bolt Centers |
|-----------------|------------|---------|-------------|-----------------------|
| 14.910.0.0429.0 | No | IC/EXT | 1.5 | 45mm x 80mm |



ONLY FOR
OKUMA

VELOCITY
SU-matic®

"L" Turret Holders

www.velocityproducts.com



A Complete Lineup of In-Stock Lathe Tooling for Okuma • Three Year Warranty*

Velocity Products • 350 Electronics Boulevard, Huntsville, AL 35824 • 256-258-5549
www.velocityproducts.com • sales@velocityproducts.com

*Warranty voided if internal coolant tools are used without coolant and coolant filtration. Exceeding specified maximum cutting tool sizes voids warranty.

© Velocity Products • Specifications subject to change without notice • Velocity-Okuma L Turret Holders 8.2018.14