

December 2019

ONLY FOR  
OKUMA

# **VELOCITY** **SU-matic®**

LB35III/LB45III • LU35II/LU45II

[www.velocityproducts.com](http://www.velocityproducts.com)



A Complete Lineup of In-Stock Lathe Tooling for Okuma • Three Year Warranty

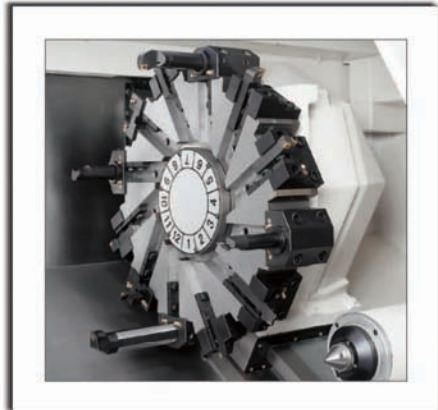
## VELOCITY SU-matic®

### Velocity Tooling: *Only for Okuma*

Velocity Products has the largest inventory of lathe tooling for **Okuma** in North America. Velocity is the OEM supplier of tooling startup kits for **Okuma** lathes. Velocity tooling is designed and manufactured by SU-matic – a worldwide leader in tooling technology headquartered in Switzerland. SU-matic has several **Okuma** machine tools in their manufacturing facility. SU-matic works closely with engineers from **Okuma America**, **Okuma Japan**, and **Okuma Europe** when designing tools. This engineering collaboration ensures flawless tooling performance on **Okuma** lathes, multitasking machines, and machining centers. Velocity/SU-matic tooling is available **Only for Okuma** machine tools.

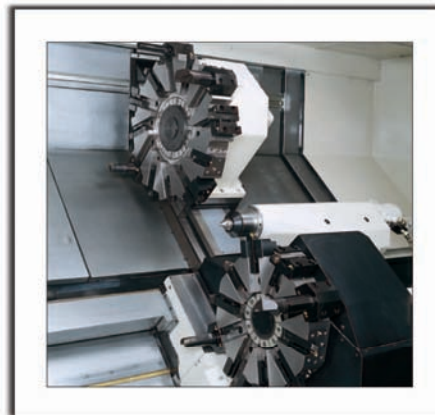
### Velocity Tooling Technology

Velocity tools are delivered ready to use; all live tools are run-in at the factory and internal coolant tools are pressure tested as a final quality check prior to shipment. Velocity tools are greased for life; no customer maintenance is required. Velocity/SU-matic tools are CMM inspected and serialized records are kept on file.



### Three Year Warranty

Velocity/SU-matic Tooling is designed to give years of service under the most demanding applications. The build quality of our tool holders allows us to back them with an **UNMATCHED Three Year Factory Warranty**.







## Contents

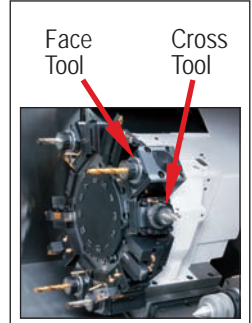
VELOCITY TOOLING MATRIX • ORDER FORM	3
LB35III / LB45III • LU35II / LU45II TOOLING KITS	4
LB35III / LU35II ID HOLDER	5
LB35III / LU35II OD-I HOLDER	5
LB35III / LU35II OD-II HOLDER	6
LB45III / LU45II ID HOLDER	7
LB45III / LU45II OD-I HOLDER	7
LB45III / LU45II OD-II HOLDER	8
LB35III / LB45III INTERFERENCE DRAWINGS	9
LU35II / LU45II INTERFERENCE DRAWINGS	10

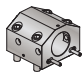


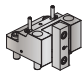
# Tool Matrix • Order Form

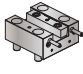
Company \_\_\_\_\_  
 Contact \_\_\_\_\_  
 Address \_\_\_\_\_  
 City, State, Zip \_\_\_\_\_  
 E-mail \_\_\_\_\_  
 Phone/Fax # \_\_\_\_\_  
 Dealer Location \_\_\_\_\_

Tool  
Description



Boring Bar Holders							
Holder Type	Lathe Model	Tool #	Quantity	Page	Bar Size (Inches)	Reversible (sub/main)	Coolant
Boring Bar Holders 	LB35III LU35II	14.910.0.0309.0		5	2	-	IC & EXT
	LB45III LU45II	14.910.0.0312.0		7	2.5	-	IC & EXT

OD-I Length Turning Holders							
Holder Type	Lathe Model	Tool #	Quantity	Page	Stick Size (Inches)	Reversible (sub/main)	Coolant
OD-I Holders 	LB35III LU35II	14.910.0.0310.0		5	1.0	No	External
	LB45III LU45II	14.910.0.0313.0		7	1.25	No	External

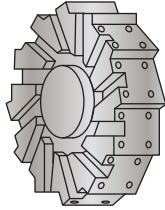
OD-II Face Turning Holder							
Holder Type	Lathe Model	Tool #	Quantity	Page	Stick Size (Inches)	Reversible (sub/main)	Coolant
OD-II Holders 	LB35III LU35II	14.910.0.0311.0		6	1.0	No	External
	LB45III LU45II	14.910.0.0314.0		8	1.25	No	External

# VELOCITY TOOLING FOR OKUMA LB35III/LB45III • LU35II/LU45II

## LB35III/LB45III, LU35II/LU45II Tooling Kits

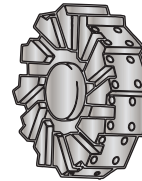


### LB35III/LB45III • V12 Turret

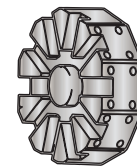


### LU35II/LU45II • V12 L / V10 L Turrets

V12 Upper Turret



V10 Lower Turret



Description		Static Kit LB35III	Static Kit LB45III	Description		Static Kit LU35II	Static Kit LU45II
Tool Type Tool Size Velocity #	Turrets	L	L	Tool Type Tool Size Velocity #	Turret / Type	Upper: V12 Static Lower: V10 Static	Upper: V12 Static Lower: V10 Static
	Part # OAC	KUP-1001-00	KUP-1002-00		Part # OAC	KUP-1003-00	KUP-1004-00
	Part # Velocity	14.430.0.0144.0	14.430.0.0145.0		Part # Velocity	14.430.0.0146.0	14.430.0.0147.0
OD-I 1" 14.910.0.0310.0		4		OD-I 1" 14.910.0.0310.0		6	
ID 2" 14.910.0.0309.0		5		ID 2" 14.910.0.0309.0		8	
OD-I 1.25" 14.910.0.0313.0			4	OD-I 1.25" 14.910.0.0313.0			6
ID 2.5" 14.910.0.0312.0			5	ID 2.5" 14.910.0.0312.0			8

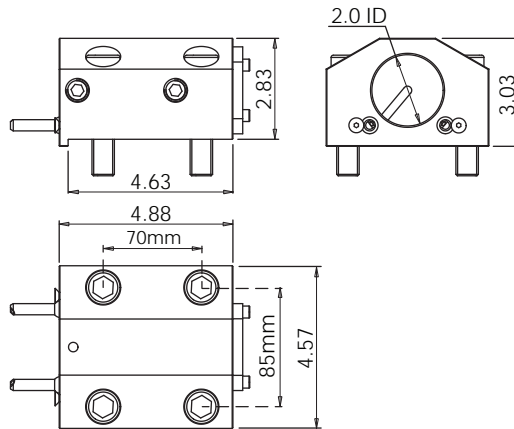
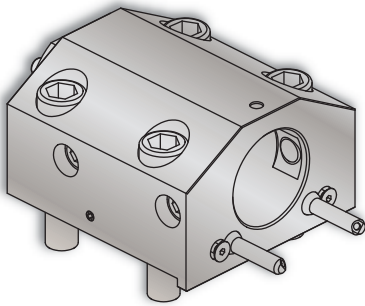


# LB35III/LU35II "L" Turret Holders



### ID Holder for LB35III • LU35II

### Notes



*VELOCITY/SU-matic* ID holders can be used with both internal and external coolant. **Internal Coolant Plates** are included with all *VELOCITY/SU-matic* multitasking turret ID holders.

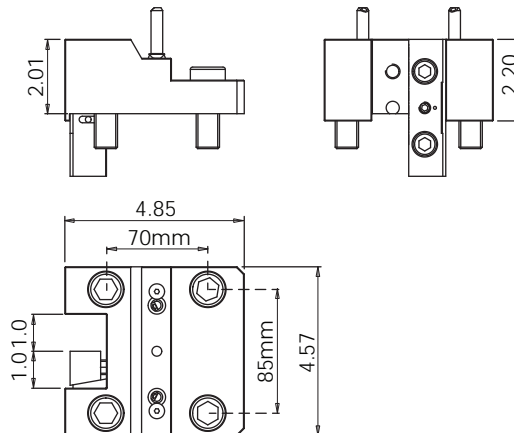
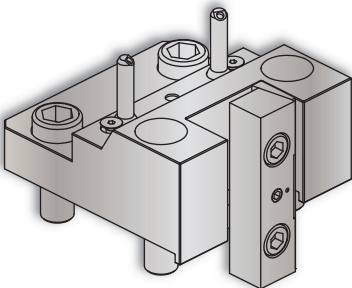
*VELOCITY/SU-matic* tooling for OKUMA is manufactured on OKUMA machine tools.

Coolant filtration is recommended when using ID holders with internal coolant plates.

Lathe Model	Tool #	Reversible (Main/Sub)	Coolant	ID	Height	Depth
LB35III • LU35II	14.910.0.0309.0	-	IC/EXT	2.0"	3.03"	4.88"

### OD-I Holder for LB35III • LU35II

### Notes



3D Models (.stp) and CAS (.stl) files are available for all *VELOCITY/SU-matic* tool holders. Please contact Velocity: [sales@velocityproducts.com](mailto:sales@velocityproducts.com).

*VELOCITY/SU-matic* tooling for OKUMA is manufactured on OKUMA machine tools.

*VELOCITY* has the most complete inventory of tooling for OKUMA machine tools in North America.

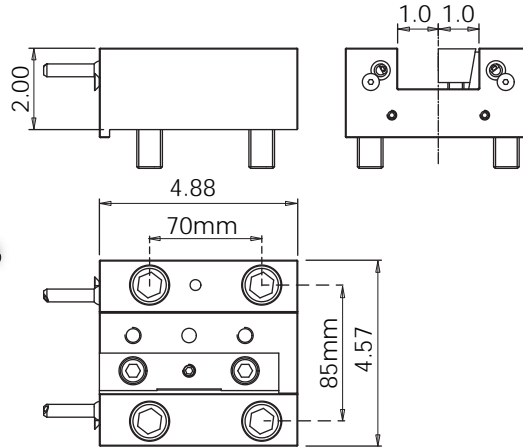
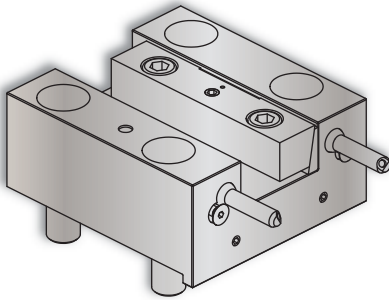
Lathe Model	Tool #	Reversible (Main/Sub)	Stick Size	Mounting Bolt Centers	Height	Depth
LB35III • LU35II	14.910.0.0310.0	No	1.0"	70mm x 85mm	2.01"	4.85"

# LB35III/LU35II "L" Turret Holders



OD-II Holder for LB35III • LU35II

Notes



3D Models (.stp) and CAS (.stl) files are available for all *VELOCITY/SU-matic* tool holders. Please contact Velocity: [sales@velocityproducts.com](mailto:sales@velocityproducts.com).

*VELOCITY/SU-matic* tooling for OKUMA is manufactured on OKUMA machine tools.

*VELOCITY* has the most complete inventory of tooling for OKUMA machine tools in North America.

Lathe Model	Tool #	Reversible (Main/Sub)	Stick Size	Mounting Bolt Centers	Height	Depth
LB35III • LU35II	14.910.0.0311.0	No	1.0"	70mm x 85mm	2.00"	4.88"





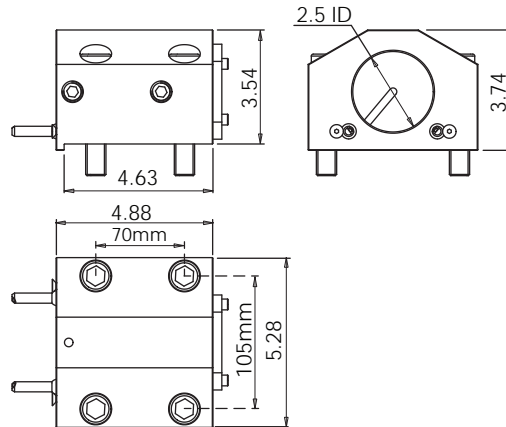
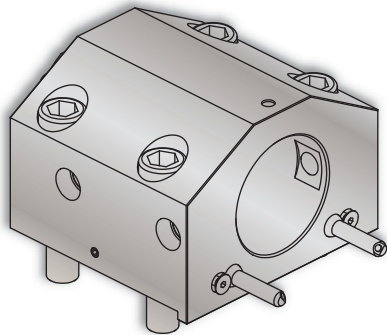
# VELOCITY TOOLING FOR OKUMA LB35III/LB45III • LU35II/LU45II

## LB45III/LU45II "L" Turret Holders



### ID Holder for LB45III • LU45II

### Notes



*VELOCITY/SU-matic* ID holders can be used with both internal and external coolant. **Internal Coolant Plates** are included with all *VELOCITY/SU-matic* multitasking turret ID holders.

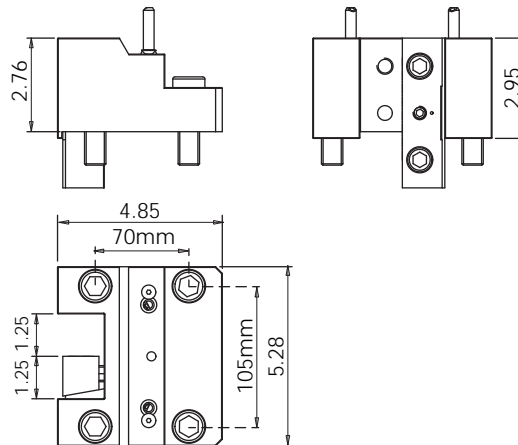
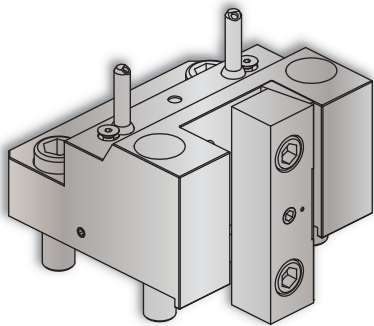
*VELOCITY/SU-matic* tooling for OKUMA is manufactured on OKUMA machine tools.

Coolant filtration is recommended when using ID holders with internal coolant plates.

Lathe Model	Tool #	Reversible (Main/Sub)	Coolant	ID	Height	Depth
LB45III • LU45II	14.910.0.0312.0	-	IC/EXT	2.5"	3.54"	4.88"

### OD-I Holder for LB45III • LU45II

### Notes



3D Models (.stp) and CAS (.stl) files are available for all *VELOCITY/SU-matic* tool holders. Please contact Velocity: [sales@velocityproducts.com](mailto:sales@velocityproducts.com).

*VELOCITY/SU-matic* tooling for OKUMA is manufactured on OKUMA machine tools.

*VELOCITY* has the most complete inventory of tooling for OKUMA machine tools in North America.

Lathe Model	Tool #	Reversible (Main/Sub)	Stick Size	Mounting Bolt Centers	Height	Depth
LB45III • LU45II	14.910.0.0313.0	No	1.25"	70mm x 105mm	2.76"	4.85"

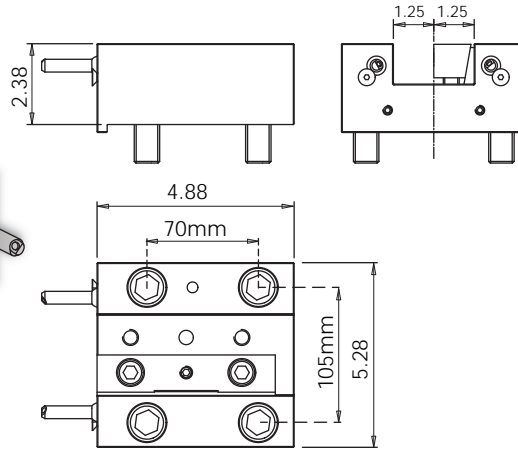
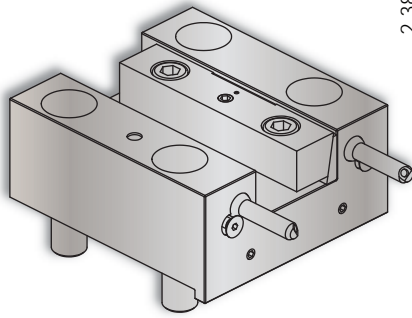


# LB45III/LU45II "L" Turret Holders



OD-II Holder for LB45III • LU45II

Notes



3D Models (.stp) and CAS (.stl) files are available for all *VELOCITY/SU-matic* tool holders. Please contact Velocity: [sales@velocityproducts.com](mailto:sales@velocityproducts.com).

*VELOCITY/SU-matic* tooling for OKUMA is manufactured on OKUMA machine tools.

*VELOCITY* has the most complete inventory of tooling for OKUMA machine tools in North America.

Lathe Model	Tool #	Reversible (Main/Sub)	Stick Size	Mounting Bolt Centers	Height	Depth
LB45III • LU45II	14.910.0.0314.0	No	1.25"	70mm x 105mm	2.38"	4.88"



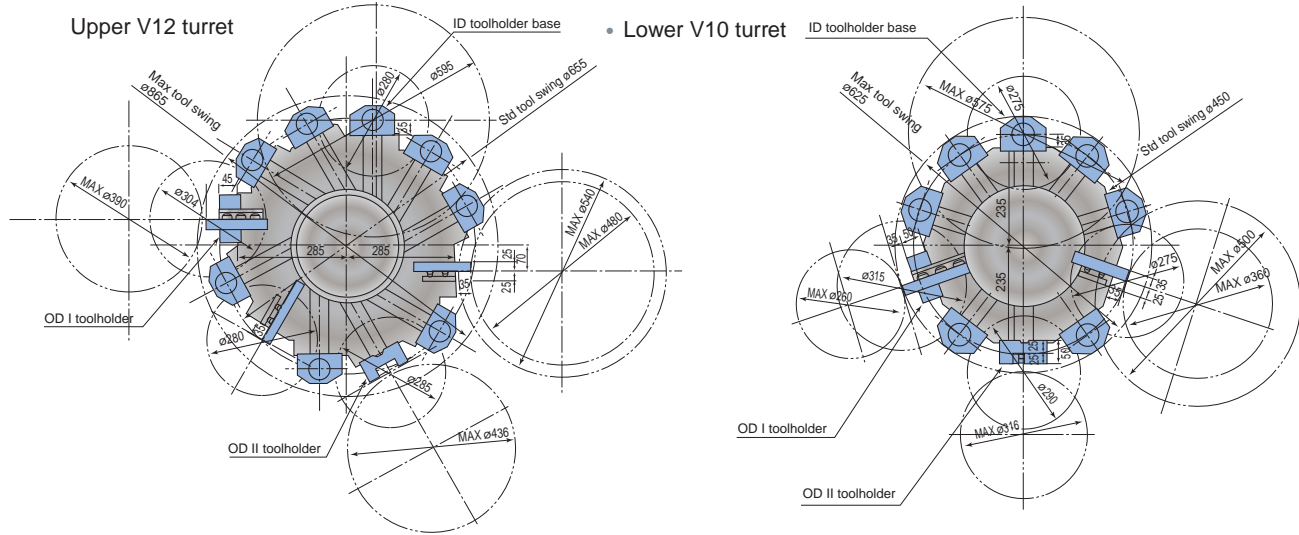


# LU35II/LU45II Interference Diagrams

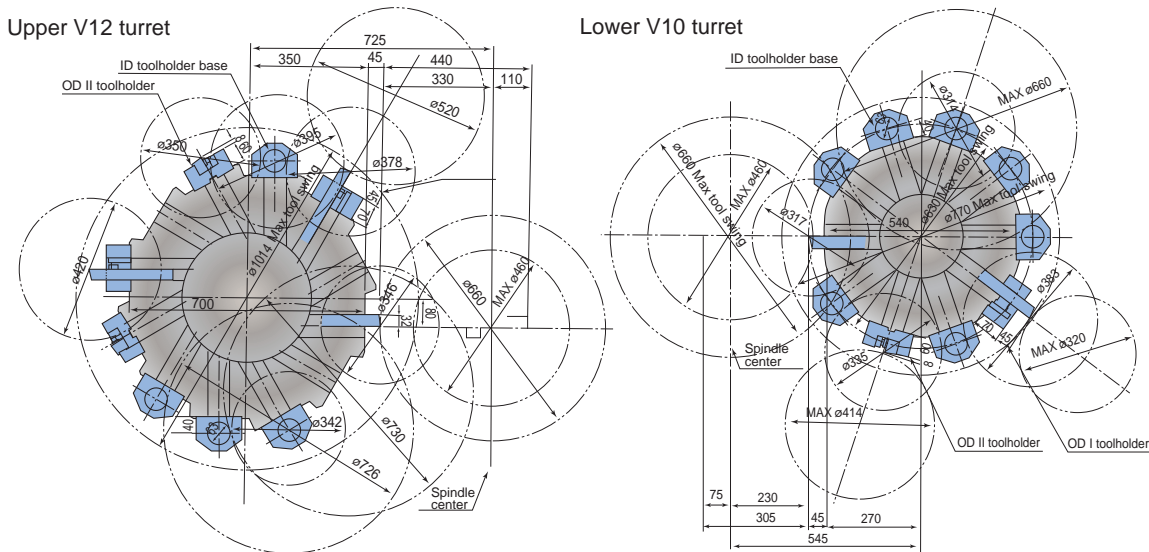


LU35II / LU45II (12) Position Upper L Turret / (10) Position Lower L Turret Interference Diagrams

## LU35II Turret



## LU45II Turret





ONLY FOR  
OKUMA

**VELOCITY**  
**SU-matic®**

LB35III/LB45III • LU35II/LU45II

[www.velocityproducts.com](http://www.velocityproducts.com)



A Complete Lineup of In-Stock Lathe Tooling for Okuma • Three Year Warranty\*

Velocity Products • 350 Electronics Boulevard, Huntsville, AL 35824 • 256-258-5549  
[www.velocityproducts.com](http://www.velocityproducts.com) • [sales@velocityproducts.com](mailto:sales@velocityproducts.com)

\*Warranty voided if internal coolant tools are used without coolant and coolant filtration. Exceeding specified maximum cutting tool sizes voids warranty.

© Velocity Products • Specifications subject to change without notice • Velocity-Okuma LB/LU 35/45 L Turret Holders 7.2018.8