

December 2019

ONLY FOR
OKUMA

VELOCITY **SU-matic®**

MULTUS U3000/U4000/U5000

www.velocityproducts.com



A Complete Lineup of In-Stock Lathe Tooling for Okuma • Three Year Warranty

VELOCITY **SU-matic**[®]

Velocity Tooling: Only for Okuma

Velocity Products has the largest inventory of lathe tooling for **Okuma** in North America. Velocity is the OEM supplier of tooling startup kits for **Okuma** lathes. Velocity tooling is designed and manufactured by SU-matic – a worldwide leader in tooling technology headquartered in Switzerland. SU-matic has several **Okuma** machine tools in their manufacturing facility. SU-matic works closely with engineers from **Okuma America**, **Okuma Japan**, and **Okuma Europe** when designing tools. This engineering collaboration ensures flawless tooling performance on **Okuma** lathes, multitasking machines, and machining centers. Velocity/SU-matic tooling is available **Only for Okuma** machine tools.

Velocity Tooling Technology

Velocity tools are delivered ready to use; all live tools are run-in at the factory and internal coolant tools are pressure tested as a final quality check prior to shipment. Velocity tools are greased for life; no customer maintenance is required. Velocity/SU-matic tools are CMM inspected and serialized records are kept on file.

Three Year Warranty

Velocity/SU-matic Tooling is designed to give years of service under the most demanding applications. The build quality of our tool holders allows us to back them with an **UNMATCHED Three Year Factory Warranty**.



VELOCITY **SU-matic**[®]

Contents

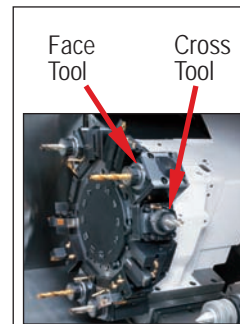
VELOCITY TOOLING MATRIX • ORDER FORM	3
TOOLING KITS	6
CROSS (RADIAL) TOOLS	7
FACE (AXIAL) TOOLS	8
HOBGING TOOL	9
BORING BAR HOLDERS	9
OD-I LENGTH TURNING HOLDERS	11
OD-II FACE TURNING HOLDERS	13
CUT-OFF BLADE HOLDERS	14
SU-MATIC CAPTO [®] OUTPUT LIVE TOOLS	15
SU-MATIC CAPTO [®] OUTPUT STATIC TOOLS	16



Tool Matrix • Order Form

Company _____
 Contact _____
 Address _____
 City, State, Zip _____
 E-mail _____
 Phone/Fax # _____
 Dealer Location _____

Tool
 Description
 Multus U3000
 Multus U4000
 Multus U5000



Turret Plugs

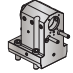
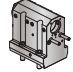
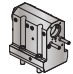
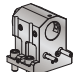
Machine Model	Part #	Quantity
Multus U3000/U4000/U5000	14.430.0.0086.0	

Cross Tools

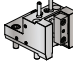
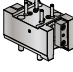
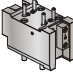
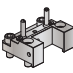
Tool Type	Tool #	Quantity	Page	Coolant (PSI)	Output	Ratio (In:Out)	Torque (Nm)	Maximum RPM
Cross	14.101.0.0270.0 (14.101.0.0074.0)		7	External	ER-32	1:1	60	6,000
	14.101.0.0269.0 (14.101.0.0073.0)		7	IC (1,000)	ERC-32	1:1	60	6,000
Offset Cross	14.101.0.0287.0		7	External	ERAX-25	1:1	40	6,000
	14.101.0.0146.1		7	IC (1,000)	ERAXC-25	1:1	40	6,000
Face	14.800.0.0366.0		8	External	ER-32	1:1	60	6,000
	14.800.0.0367.0		8	IC (1,450)	ER-32	1:1	60	6,000
Face Main Sub	14.801.0.0123.0 (14.801.0.0108.0)		8	External	(2) ER-32	1:1	60	6,000
Hobber	14.800.0.0228.0		9	External	3/4" Arbor	2:1	50	3,000

Tool Matrix • Order Form

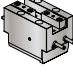
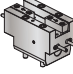
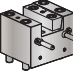
Boring Bar Holders

Holder Type	Holder Style	Tool #	Quantity	Page	Bar Size	Reversible (main/sub)	Coolant	
Boring Bar Holders		Boring Bar (Offset)	14.910.0.0173.0		9	1.5"	Yes	IC & EXT
		Boring Bar (Full Depth)	14.910.0.0174.0		10	1.5"	-	IC & EXT
		2" Boring Bar	14.910.0.0419.0		10	2"	-	IC & EXT
		Boring Bar (Tailstock)	14.910.0.0429.0		11	1.5"	-	IC & EXT

OD-I Length Turning Holders

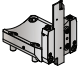
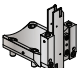
Holder Type	Holder Style	Tool #	Quantity	Page	Stick Size	Reversible (main/sub)	Coolant	
OD-I Holders		Single	14.910.0.0175.0		11	1.0"	Yes	External
		Main/Sub	14.910.0.0176.0		12	1.0"	No	External
		Main/Sub Extended Length	14.910.0.0372.0		12	1.0"	No	External
		Tailstock Machine	14.910.0.0282.B		13	1.0"	No	External

OD-II Face Turning Holder


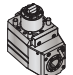
Holder Type	Holder Style	Tool #	Quantity	Page	Stick Size	Reversible (main/sub)	Coolant	
OD-II Holders		Main/Sub	14.910.0.0177.0		13	1.0"	No	External
		Main/Sub Extended Length	14.910.0.0374.0		14	1.0"	No	External
		Tailstock Machine	14.910.0.0428.0		14	1.0"	No	External

Tool Matrix • Order Form

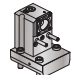
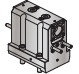
Cut-Off Holders

Holder Type	Holder Style	Tool #	Quantity	Page	Blade Size	Reversible (main/sub)	Coolant	
Blade		Basic Holder	14.910.0.0169.1		15	32mm	Yes	External
		Premium Holder (Double)	14.910.0.0207.1		15	32mm	Yes	External

SU-matic Capto® Live Tools

Tool Type	Tool #	Quantity	Page	Coolant (PSI)	Output	Ratio (In:Out)	Torque	Maximum RPM
Cross	 14.101.0.0325.0 (14.101.0.0138.1)		16	IC (1,000)	C4	1:1	60	6,000
Face	 14.800.0.0368.0		16	IC (1,450)	C4	1:1	60	6,000

SU-matic Capto® Static Tools

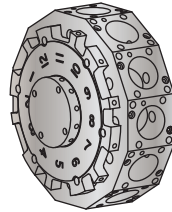
Holder Type	Holder Style	Tool #	Quantity	Page	Output	Reversible (main/sub)	Coolant	
C4 OD-I Holders		OD-I-S	14.910.0.0266.0		17	C4	Yes	IC & EXT
		Main/Sub	14.910.0.0267.0		17	(2) C4	-	IC & EXT
C4 Boring Bar Holders		Single	14.910.0.0268.0		18	C4	Yes	IC & EXT
		Main/Sub	14.910.0.0269.0		18	(2) C4	-	IC & EXT

VELOCITY TOOLING FOR OKUMA MULTUS U3000/U4000/U5000

Multus Tooling Kits



MULTUS U3000/U4000/U5000 • V12 L Turret • V12 M Turret



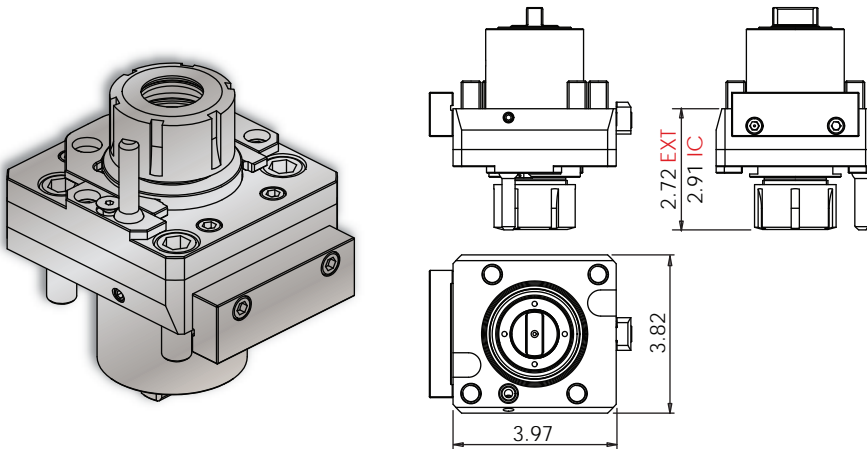
Description		Static Kit • L Turret		Static Kit • M	Live Tooling Kits	
Tool Type Tool Size Velocity #	Turret / Type	L	L/C (Tailstock Machine)	M	External Coolant	Internal Coolant
	Part # OAC	KUP-1000-00	KUP-1081-00	KUP-0990-00	KUP-0991-00	KUP-0992-00
	Part # Velocity	14.430.0143.0	14.430.0.0180.0	14.430.0.0138.0	14.430.0.0139.0	14.430.0.0140.0
OD-I-S 1" 14.910.0.0175.0		2		2		
OD-I-D 1" Main/Sub 14.910.0.0372.0		2		2		
OD-II-D 1" Main/Sub 14.910.0.0374.0		1		1		
ID 1.5" 14.910.0.0173.0		2		2		
ID 1.5" Full Depth 14.910.0.0174.0		2		2		
Turret Plug 14.430.0.0086.0				3		
OD-I 1" 14.910.0.0282.B			3			
OD-II 1" 14.910.0.0428.0			1			
ID 1.5" 14.910.0.0429.0			4			
Cross Tool ER-32 14.101.0.0270.0					2	
Face Tool ER-32 14.800.0.0366.0					2	
Cross Tool (IC) ERC-32 14.101.0.0269.0						2
Face Tool (IC) ERC-32 14.800.0.0367.0						2

VELOCITY TOOLING FOR OKUMA MULTUS U3000/U4000/U5000

Live Tools



Multus U3000/U4000/U5000 Cross Tools • ER-32 Output



Notes

Wrenches Included with Tools

Maximum Drill Ø		Maximum Mill Ø	
EXT	13/16"	EXT	23/32"
IC	3/4"	IC	23/32"

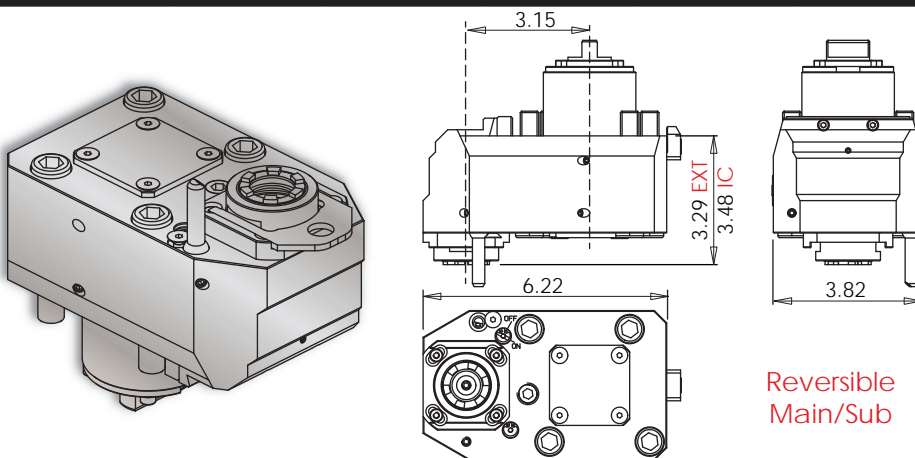
Turret Plugs 14.430.0.0086.0

* 1,000 psi internal coolant (IC) cross tool CANNOT be run without coolant.

All coolant thru live tools require 30 micron coolant filtration nominal, 50 micron coolant filtration absolute.

Tool #	Coolant	Output	Rotation (In:Out)	Ratio (In:Out)	Max. RPM	Torque	Spindle Wrench	Collet Wrench
14.101.0.0270.0 (14.101.0.0074.0)	EXT	ER-32	CW:CW	1:1	6,000	60 Nm	1005100980	7111.32000
14.101.0.0269.0 (14.101.0.0073.0)	IC & EXT* 1,000 psi	ERC-32	CW:CW	1:1	6,000	60 Nm	1005100980	7111.32000

Multus U3000/U4000/U5000 Offset Cross Tool • ERAX-25 Output



Notes

Wrenches Included with Tools

Maximum Drill Ø		Maximum Mill Ø	
EXT	5/8"	EXT	17/32"
IC	9/16"	IC	17/32"

Turret Plugs 14.430.0.0086.0

* 1,000 psi internal coolant (IC) cross tool CANNOT be run without coolant.

All coolant thru live tools require 30 micron coolant filtration nominal, 50 micron coolant filtration absolute.

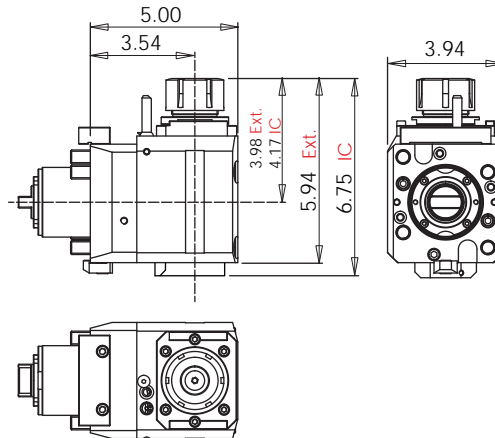
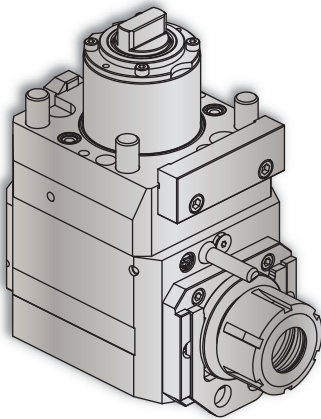
Tool #	Coolant	Output	Rotation (In:Out)	Ratio (In:Out)	Max. RPM	Torque	Spindle Wrench	Collet Wrench
14.101.0.0287.0	EXT	ERAX-25	CW:CW	1:1	6,000	40 Nm	Special	7117.25000
14.101.0.0146.1	IC & EXT* 1,000 psi	ERAXC-25	CW:CW	1:1	6,000	40 Nm	Special	7117.25000

VELOCITY TOOLING FOR OKUMA MULTUS U3000/U4000/U5000

Live Tools



Multus U3000/U4000/U5000 Face Tools • ER-32 Output



Notes

Wrenches Included with Tools

Maximum Drill Ø		Maximum Mill Ø	
EXT	13/16"	EXT	23/32"
IC	3/4"	IC	23/32"

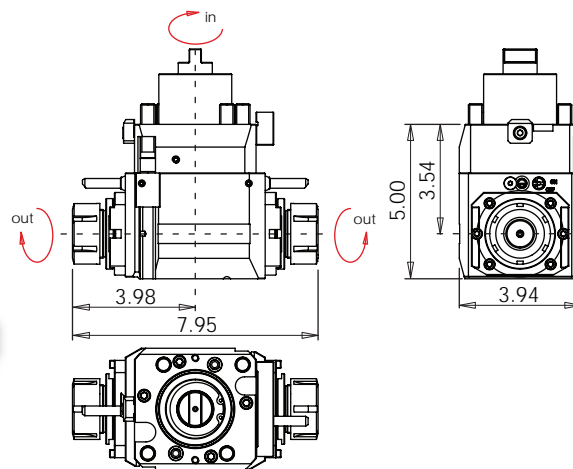
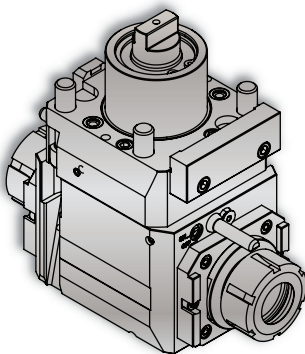
Turret Plugs 14.430.0.0086.0

* 1,450 psi internal coolant (IC) face tool **CAN** be run without coolant; the coolant sealing mechanism can be completely dis-engaged.

All coolant thru live tools require 30 micron coolant filtration nominal, 50 micron coolant filtration absolute.

Tool #	Coolant	Output	Rotation (In:Out)	Ratio (In:Out)	Max. RPM	Torque	Spindle Wrench	Collet Wrench
14.800.0.0366.0	EXT	ER-32	CW:CW	1:1	6,000	60 Nm	1005100950	7111.32000
14.800.0.0367.0	IC & EXT* 1,450 psi	ERC-32	CW:CW	1:1	6,000	60 Nm	1005100950	7111.32000

Multus U3000/U4000/U5000 Main/Sub Spindle Face Tool • ER-32 Outputs



Notes

Wrenches Included with Tools

Maximum Drill Ø	Maximum Mill Ø
13/16"	23/32"

Turret Plugs 14.430.0.0086.0

VELOCITY/SU-matic driven tools are greased for life and delivered ready to use - **no run-in required**. All driven tools are CMM inspected and internal coolant tools are pressure tested as a final quality check prior to shipment.

Tool #	Coolant	Output	Rotation (In:Out)	Ratio (In:Out)	Max. RPM	Torque	Spindle Wrench	Collet Wrench
14.801.0.0123.0 (14.801.0.0108.0)	EXT	ER-32	See Dwg. Above	1:1	6,000	60 Nm	1005100950	7111.32000

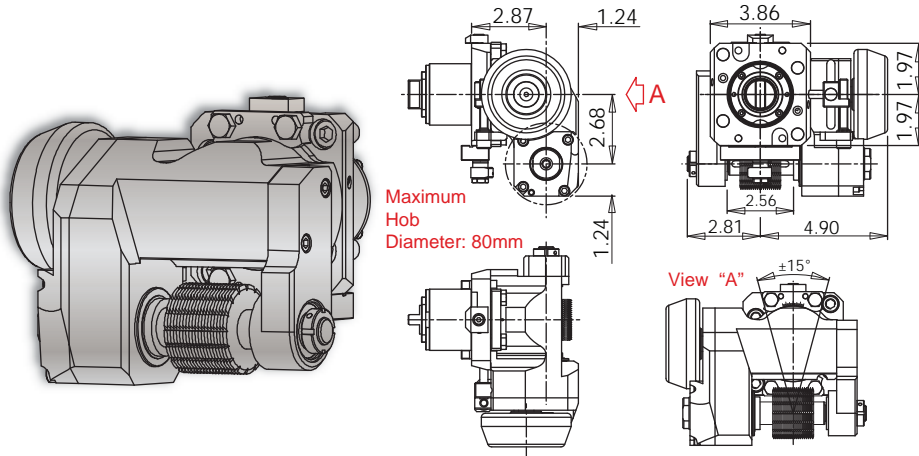
VELOCITY TOOLING FOR OKUMA MULTUS U3000/U4000/U5000

Live Tools • Static Tools



Multus U3000/U4000/U5000 Gear Hobbing Tool • 3/4" Arbor

Notes



Wrenches Included with Tools

Maximum Hob Ø	Max. Gear Quality
---------------	-------------------

80 mm	AGMA 7
-------	--------

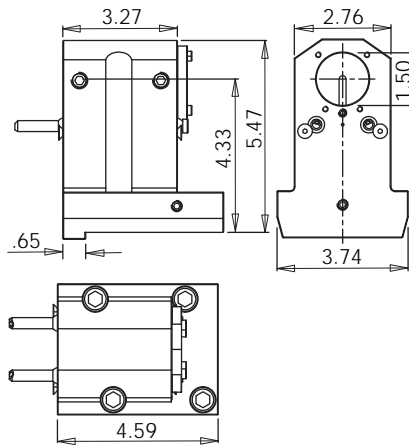
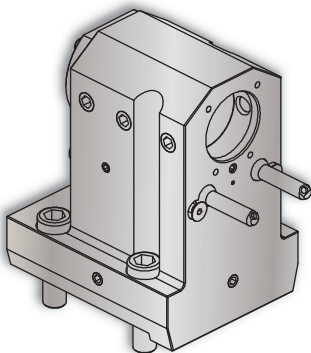
Turret Plugs	14.430.0.0086.0
--------------	-----------------

VELOCITY/SU-matic driven tools are greased for life and delivered ready to use - **no run-in required**. All driven tools are CMM inspected and internal coolant tools are pressure tested as a final quality check prior to shipment.

Tool #	Coolant	Arbor Diameter	Rotation (In:Out)	Ratio (In:Out)	Max. RPM	Torque	3/4" Arbor
14.800.0.0228.0	EXT	3/4"	CW:CCW	2:1	3,000	50 Nm	14.420.0.0126.0

Multus U3000/U4000/U5000 Boring Bar Holder

Notes



VELOCITY/SU-matic ID holders can be used with both internal and external coolant.

Internal Coolant Plates are included with all *VELOCITY/SU-matic* multitasking turret ID holders.

Turret Plugs	14.430.0.0086.0
--------------	-----------------

VELOCITY/SU-matic tooling for OKUMA is manufactured on OKUMA machine tools.

Coolant filtration is recommended when using ID holders with internal coolant plates.

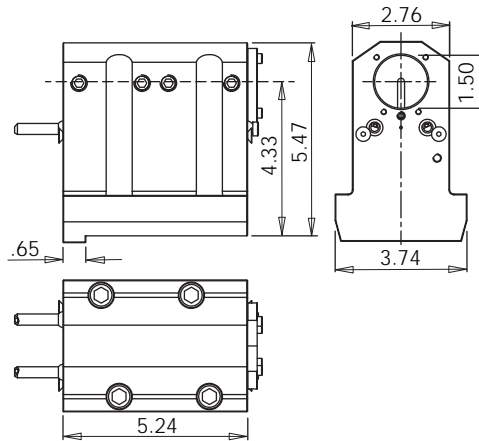
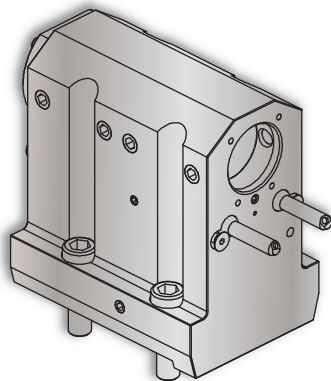
Lathe Model	Tool #	Reversible (Main/Sub)	Coolant	ID	Height	Depth (Top)
Multus	14.910.0.0173.0	Yes	IC/EXT	1.5"	5.47"	3.27"

VELOCITY TOOLING FOR OKUMA MULTUS U3000/U4000/U5000

Static Tools



Multus U3000/U4000/U5000 1.5" Full Depth Boring Bar Holder



Notes

VELOCITY/SU-matic ID holders can be used with both internal and external coolant. **Internal Coolant Plates** are included with all *VELOCITY/SU-matic* multitasking turret ID holders.

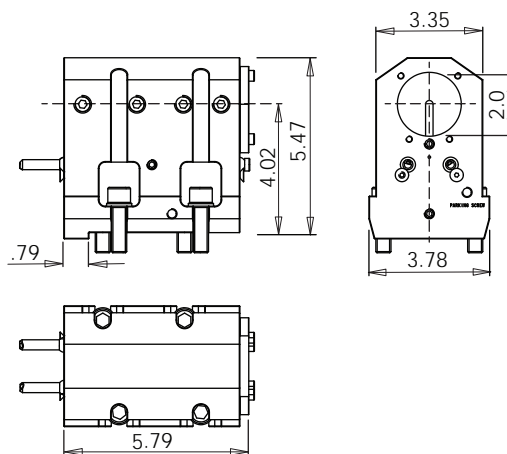
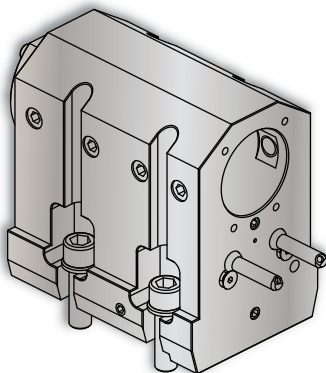
Turret Plugs	14.430.0.0086.0
--------------	-----------------

VELOCITY/SU-matic tooling for OKUMA is manufactured on OKUMA machine tools.

Coolant filtration is recommended when using ID holders with internal coolant plates.

Lathe Model	Tool #	Reversible (Main/Sub)	Coolant	ID	Height	Depth
Multus	14.910.0.0174.0	-	IC/EXT	1.5"	5.47"	5.24"

Multus U3000/U4000/U5000 2.0" Full Depth Boring Bar Holder



Notes

VELOCITY/SU-matic ID holders can be used with both internal and external coolant. **Internal Coolant Plates** are included with all *VELOCITY/SU-matic* multitasking turret ID holders.

Turret Plugs	14.430.0.0086.0
--------------	-----------------

VELOCITY/SU-matic tooling for OKUMA is manufactured on OKUMA machine tools.

Coolant filtration is recommended when using ID holders with internal coolant plates.

Lathe Model	Tool #	Reversible (Main/Sub)	Coolant	ID	Height	Depth
Multus	14.910.0.0419.0	-	IC/EXT	2.0"	5.47"	5.79"

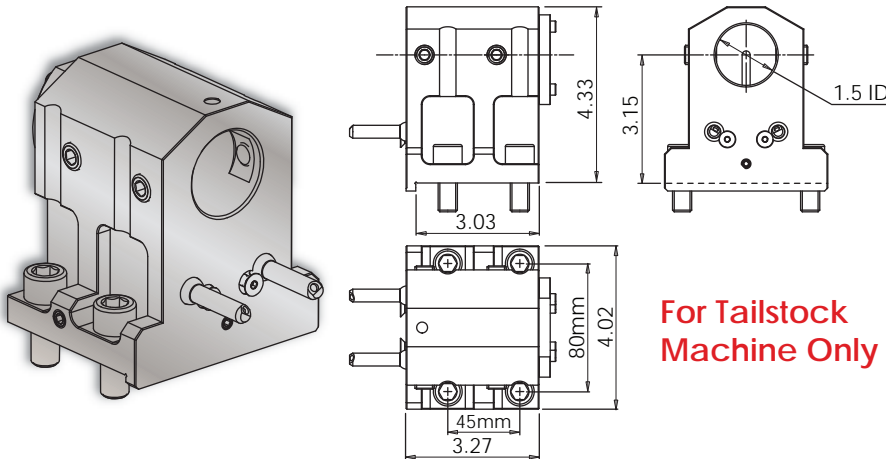
VELOCITY TOOLING FOR OKUMA MULTUS U3000/U4000/U5000

Static Tools



Multus U3000/U4000/U5000 1.5" Boring Bar Holder

Notes



VELOCITY/SU-matic ID holders can be used with both internal and external coolant. **Internal Coolant Plates** are included with all *VELOCITY/SU-matic* multitasking turret ID holders.

Turret Plugs	not applicable
--------------	-----------------------

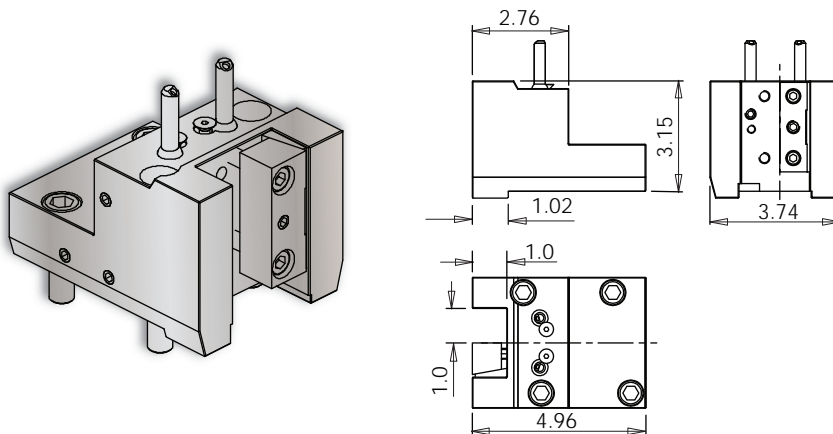
VELOCITY/SU-matic tooling for OKUMA is manufactured on OKUMA machine tools.

Coolant filtration is recommended when using ID holders with internal coolant plates.

Lathe Model	Tool #	Reversible (Main/Sub)	Coolant	ID	Height	Depth
Multus	14.910.0.0429.0	-	IC/EXT	1.5"	4.33"	3.27"

Multus U3000/U4000/U5000 OD-I-S Length Turning Holder

Notes



3D Models (.stp) and CAS (.stl) files are available for all *VELOCITY/SU-matic* tool holders. Please contact Velocity: sales@velocityproducts.com.

Turret Plugs	14.430.0.0086.0
--------------	-----------------

VELOCITY/SU-matic tooling for OKUMA is manufactured on OKUMA machine tools.

VELOCITY has the most complete inventory of tooling for OKUMA machine tools in North America.

Lathe Model	Tool #	Reversible (Main/Sub)	Stick Size	Depth	Height	Width
Multus	14.910.0.0175.0	Yes	1.0"	4.96"	3.15"	3.74"

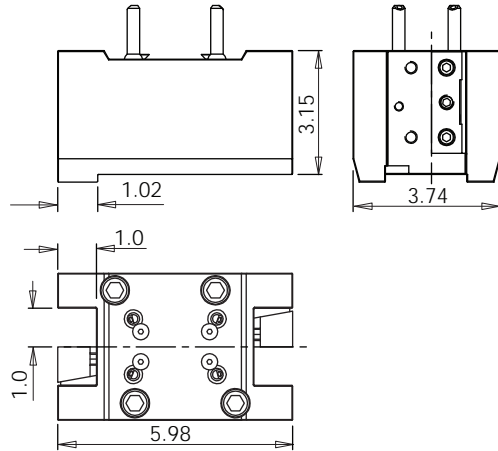
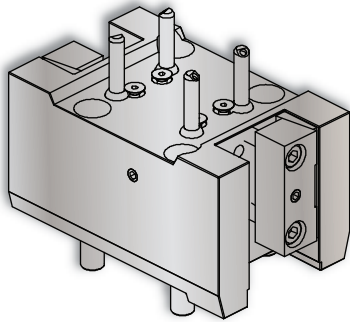
VELOCITY TOOLING FOR OKUMA MULTUS U3000/U4000/U5000

Static Tools



Multus U3000/U4000/U5000 OD-I-D Length Turning Holder • Main/Sub

Notes



3D Models (.stp) and CAS (.stl) files are available for all **VELOCITY/SU-matic** tool holders. Please contact Velocity: sales@velocityproducts.com.

Turret Plugs	14.430.0.0086.0
--------------	-----------------

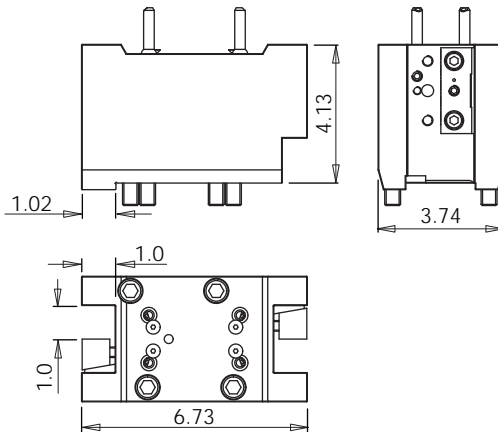
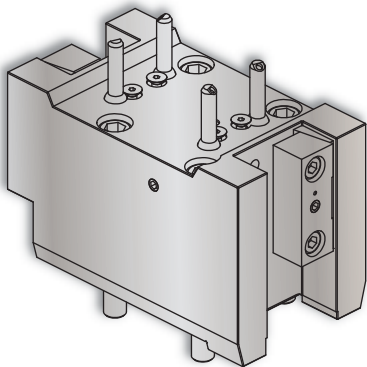
VELOCITY/SU-matic tooling for OKUMA is manufactured on OKUMA machine tools.

VELOCITY has the most complete inventory of tooling for OKUMA machine tools in North America.

Lathe Model	Tool #	Reversible (Main/Sub)	Stick Size	Depth	Height	Width
Multus	14.910.0.0176.0	No	1.0"	5.98"	3.15"	3.74"

Multus U3000/U4000/U5000 OD-I-D Extended Turning Holder • Main/Sub

Notes



3D Models (.stp) and CAS (.stl) files are available for all **VELOCITY/SU-matic** tool holders. Please contact Velocity: sales@velocityproducts.com.

Turret Plugs	14.430.0.0086.0
--------------	-----------------

VELOCITY/SU-matic tooling for OKUMA is manufactured on OKUMA machine tools.

VELOCITY has the most complete inventory of tooling for OKUMA machine tools in North America.

Lathe Model	Tool #	Reversible (Main/Sub)	Stick Size	Depth	Height	Width
Multus	14.910.0.0372.0	No	1.0"	6.73"	4.13"	3.74"

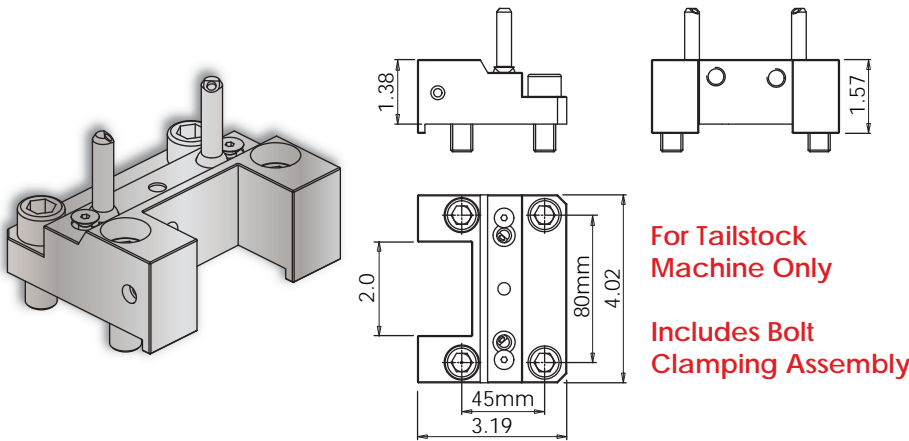
VELOCITY TOOLING FOR OKUMA MULTUS U3000/U4000/U5000

Static Tools



Multus U3000/U4000/U5000 OD-I Turning Holder

Notes



3D Models (.stp) and CAS (.stl) files are available for all *VELOCITY/SU-matic* tool holders. Please contact Velocity: sales@velocityproducts.com.

Turret Plugs	not applicable
--------------	-----------------------

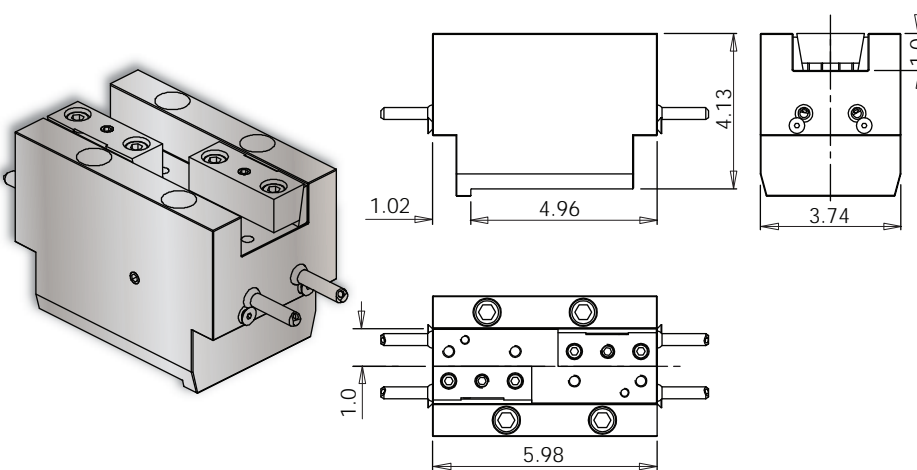
VELOCITY/SU-matic tooling for OKUMA is manufactured on OKUMA machine tools.

VELOCITY has the most complete inventory of tooling for OKUMA machine tools in North America.

Lathe Model	Tool #	Reversible (Main/Sub)	Stick Size	Depth	Height	Width
Multus	14.910.0.0282.B	No	1.0"	3.19"	1.38"	4.02"

Multus U3000/U4000/U5000 OD-II Face Turning Holder • Main/Sub

Notes



3D Models (.stp) and CAS (.stl) files are available for all *VELOCITY/SU-matic* tool holders. Please contact Velocity: sales@velocityproducts.com.

Turret Plugs	14.430.0.0086.0
--------------	-----------------

VELOCITY/SU-matic tooling for OKUMA is manufactured on OKUMA machine tools.

VELOCITY has the most complete inventory of tooling for OKUMA machine tools in North America.

Lathe Model	Tool #	Reversible (Main/Sub)	Stick Size	Depth	Height	Width
Multus	14.910.0.0177.0	No	1.0"	5.98"	4.13"	3.74"

VELOCITY TOOLING FOR OKUMA MULTUS U3000/U4000/U5000

Static Tools



Multus U3000/U4000/U5000 OD-II Extended Face Turning Holder • Main/Sub

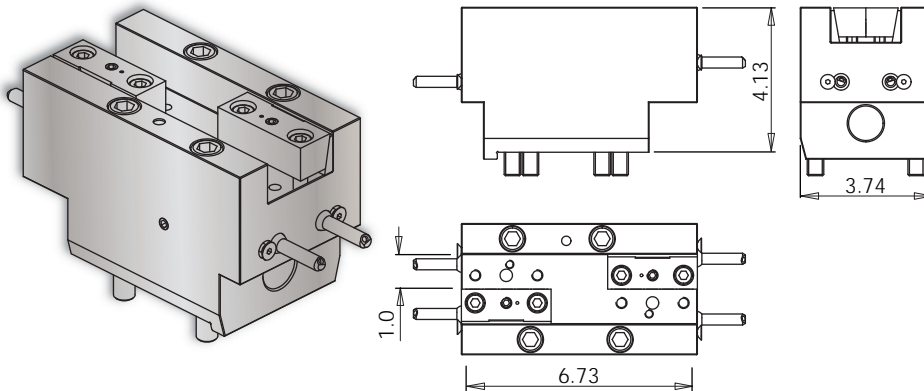
Notes

3D Models (.stp) and CAS (.stl) files are available for all **VELOCITY/SU-matic** tool holders. Please contact Velocity: sales@velocityproducts.com.

Turret Plugs	14.430.0.0086.0
--------------	-----------------

VELOCITY/SU-matic tooling for OKUMA is manufactured on OKUMA machine tools.

VELOCITY has the most complete inventory of tooling for OKUMA machine tools in North America.



Lathe Model	Tool #	Reversible (Main/Sub)	Stick Size	Depth	Height	Width
Multus	14.910.0.0374.0	No	1.0"	6.73"	4.13"	3.74"

Multus U3000/U4000/U5000 OD-II Face Turning Holder

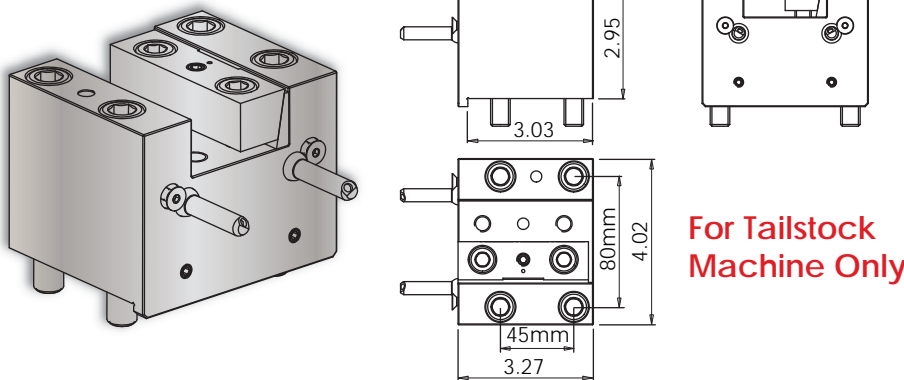
Notes

3D Models (.stp) and CAS (.stl) files are available for all **VELOCITY/SU-matic** tool holders. Please contact Velocity: sales@velocityproducts.com.

Turret Plugs	not applicable
--------------	----------------

VELOCITY/SU-matic tooling for OKUMA is manufactured on OKUMA machine tools.

VELOCITY has the most complete inventory of tooling for OKUMA machine tools in North America.

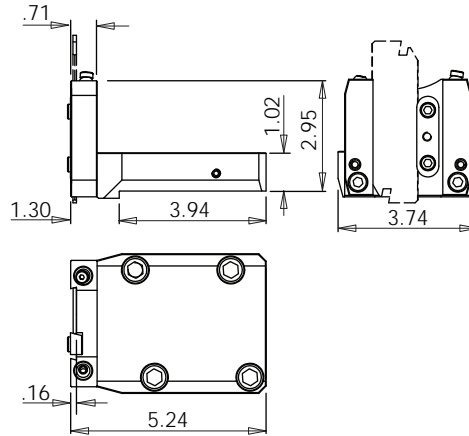
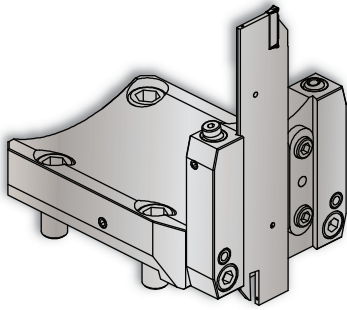


Lathe Model	Tool #	Reversible (Main/Sub)	Stick Size	Depth	Height	Width
Multus	14.910.0.0428.0	No	1.0"	3.27"	2.95"	4.02"

Static Tools



Multus U3000/U4000/U5000 Cut-Off Blade Holder • Basic



Notes

3D Models (.stp) and CAS (.stl) files are available for all *VELOCITY/SU-matic* tool holders. Please contact Velocity: sales@velocityproducts.com.

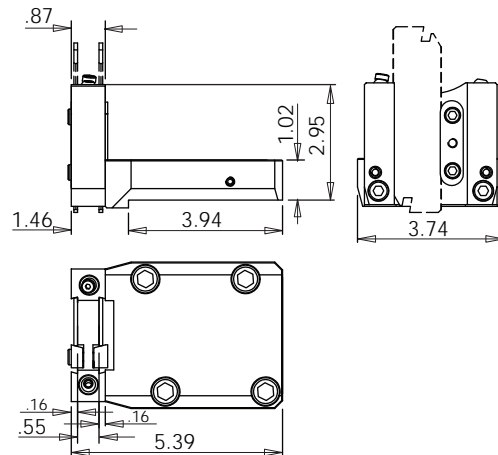
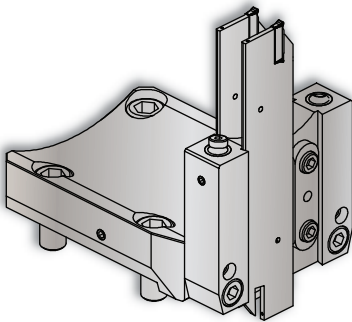
Turret Plugs	14.430.0.0086.0
--------------	-----------------

VELOCITY/SU-matic tooling for OKUMA is manufactured on OKUMA machine tools.

VELOCITY has the most complete inventory of tooling for OKUMA machine tools in North America.

Lathe Model	Tool #	Reversible (Main/Sub)	Blade Size	Depth	Height	Width
Multus	14.910.0.0169.1	Yes	32 mm	5.24"	2.95"	3.74"

Multus U3000/U4000/U5000 Cut-Off Blade Holder • Premium



Notes

3D Models (.stp) and CAS (.stl) files are available for all *VELOCITY/SU-matic* tool holders. Please contact Velocity: sales@velocityproducts.com.

Turret Plugs	14.430.0.0086.0
--------------	-----------------

VELOCITY/SU-matic tooling for OKUMA is manufactured on OKUMA machine tools.

VELOCITY has the most complete inventory of tooling for OKUMA machine tools in North America.

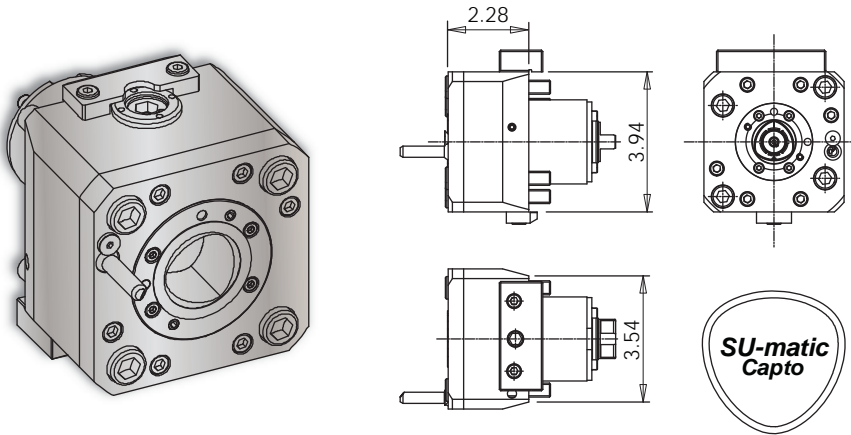
Lathe Model	Tool #	Reversible (Main/Sub)	Blade Size	Depth	Height	Width
Multus	14.910.0.0207.1	Yes	32 mm	5.39"	2.95"	3.74"

VELOCITY TOOLING FOR OKUMA MULTUS U3000/U4000/U5000

SU-matic Capto® Tools



Multus U3000/U4000/U5000 C4 Cross Tool



Notes

REGO-FIX® C4 Collet Chucks

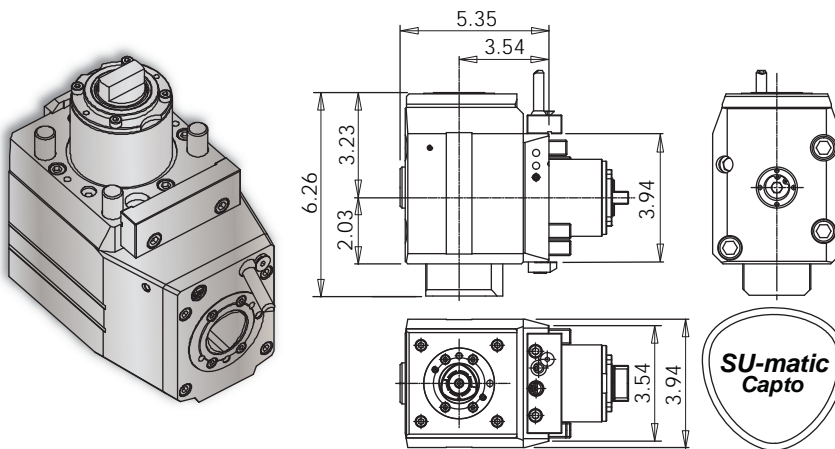
ER Output	Rego-Fix Part #
ER-16	2804.11630
ER-20	2804.12010
ER-25	2804.12510
ER-32	2804.13210
Turret Plugs	14.430.0.0086.0

* 1,000 psi internal coolant (IC) cross tool CANNOT be run without coolant.

All coolant thru live tools require 30 micron coolant filtration nominal, 50 micron coolant filtration absolute.

Tool #	Coolant	Output	Rotation (In:Out)	Ratio (In:Out)	Max. RPM	Torque	Hex Wrench	C4 Collet Chucks
14.101.0.0325.0 (14.101.0.0138.1)	IC & EXT* 1,000 psi	C4	CW:CW	1:1	6,000	60 Nm	10 mm	See Above

Multus U3000/U4000/U5000 C4 Face Tool



Notes

REGO-FIX® C4 Collet Chucks

ER Output	Rego-Fix Part #
ER-16	2804.11630
ER-20	2804.12010
ER-25	2804.12510
ER-32	2804.13210
Turret Plugs	14.430.0.0086.0

* 1,450 psi internal coolant (IC) face tool CAN be run without coolant; the coolant sealing mechanism can be completely dis-engaged.

All coolant thru live tools require 30 micron coolant filtration nominal, 50 micron coolant filtration absolute.

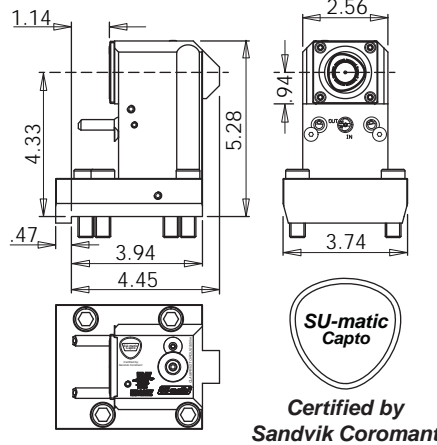
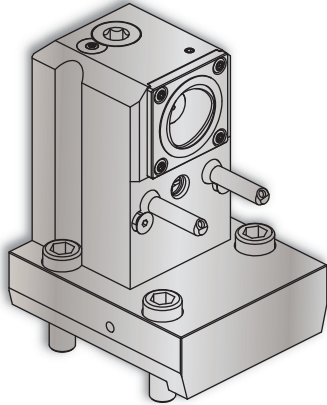
Tool #	Coolant	Output	Rotation (In:Out)	Ratio (In:Out)	Max. RPM	Torque	Hex Wrench	C4 Collet Chucks
14.800.0.0368.0	IC & EXT* 1,450 psi	C4	CW:CW	1:1	6,000	60 Nm	10 mm	See Above

VELOCITY TOOLING FOR OKUMA MULTUS U3000/U4000/U5000

SU-matic Capto® Tools



Multus U3000/U4000/U5000 C4 Boring Bar Holder



Notes

REGO-FIX® C4 Collet Chucks

ER Output	Rego-Fix Part #
ER-16	2804.11630
ER-20	2804.12010
ER-25	2804.12510
ER-32	2804.13210

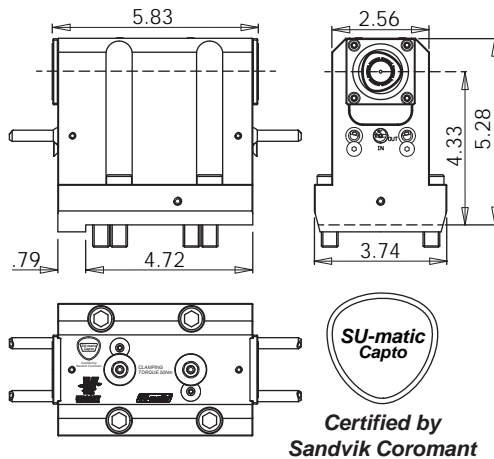
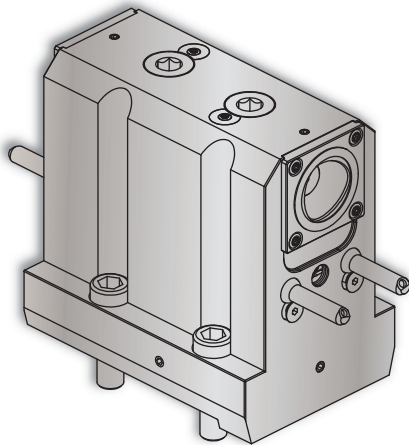
Turret Plugs 14.430.0.0086.0

VELOCITY/SU-matic tooling for OKUMA is manufactured on OKUMA machine tools.

SU-matic Capto® static tools are coolant thru. Coolant filtration is recommended.

Lathe Model	Tool #	Reversible (Main/Sub)	Coolant	Output	Hex Wrench	C4 Collet Chucks
Multus	14.910.0.0268.0	Yes	IC/EXT	C4	10 mm	See Above

Multus U3000/U4000/U5000 C4 Boring Bar Holder • Main/Sub



Notes

REGO-FIX® C4 Collet Chucks

ER Output	Rego-Fix Part #
ER-16	2804.11630
ER-20	2804.12010
ER-25	2804.12510
ER-32	2804.13210

Turret Plugs 14.430.0.0086.0

VELOCITY/SU-matic tooling for OKUMA is manufactured on OKUMA machine tools.

SU-matic Capto® static tools are coolant thru. Coolant filtration is recommended.

Lathe Model	Tool #	Reversible (Main/Sub)	Coolant	Output	Hex Wrench	C4 Collet Chucks
Multus	14.910.0.0269.0	-	IC/EXT	C4	10 mm	See Above

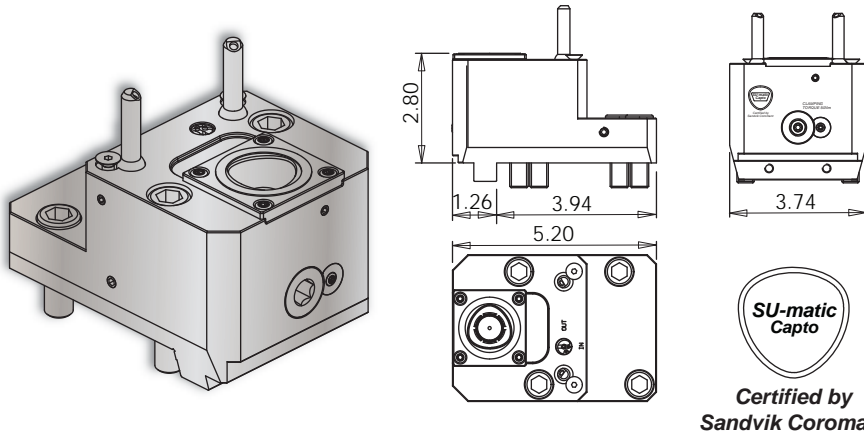
VELOCITY TOOLING FOR OKUMA MULTUS U3000/U4000/U5000

SU-matic Capto® Tools



Multus U3000/U4000/U5000 C4 OD-I-S Length Turning Holder

Notes



REGO-FIX® C4 Collet Chucks

ER Output	Rego-Fix Part #
ER-16	2804.11630
ER-20	2804.12010
ER-25	2804.12510
ER-32	2804.13210

Turret Plugs	14.430.0.0086.0
--------------	-----------------

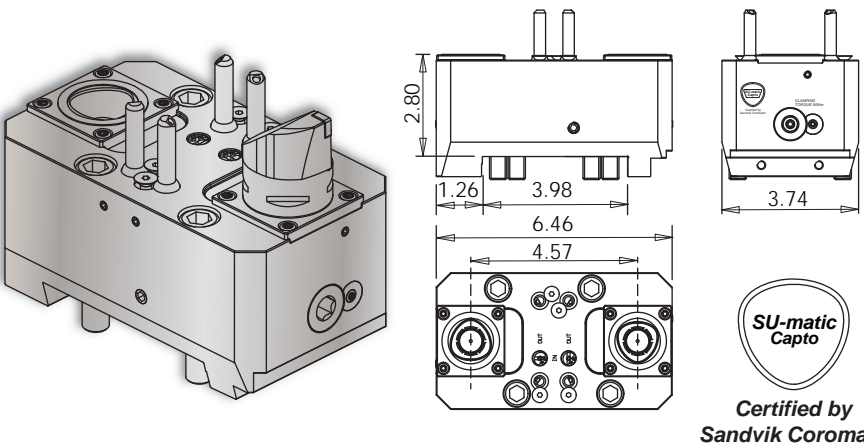
VELOCITY/SU-matic tooling for OKUMA is manufactured on OKUMA machine tools.

SU-matic Capto® static tools are coolant thru. Coolant filtration is recommended.

Lathe Model	Tool #	Reversible (Main/Sub)	Coolant	Output	Hex Wrench	C4 Collet Chucks
Multus	14.910.0.0266.0	Yes	IC/EXT	C4	10 mm	See Above

Multus U3000/U4000/U5000 C4 OD-I-D Length Turning Holder

Notes



REGO-FIX® C4 Collet Chucks

ER Output	Rego-Fix Part #
ER-16	2804.11630
ER-20	2804.12010
ER-25	2804.12510
ER-32	2804.13210

Turret Plugs	14.430.0.0086.0
--------------	-----------------

VELOCITY/SU-matic tooling for OKUMA is manufactured on OKUMA machine tools.

SU-matic Capto® static tools are coolant thru. Coolant filtration is recommended.

Lathe Model	Tool #	Reversible (Main/Sub)	Coolant	Output	Hex Wrench	C4 Collet Chucks
Multus	14.910.0.0267.0	-	IC/EXT	C4 (2)	10 mm	See Above

ONLY FOR
OKUMA

VELOCITY
SU-matic®

MULTUS U3000/U4000/U5000

www.velocityproducts.com



A Complete Lineup of In-Stock Lathe Tooling for Okuma • Three Year Warranty*

Velocity Products • 350 Electronics Boulevard, Huntsville, AL 35824 • 256-258-5549
www.velocityproducts.com • sales@velocityproducts.com

*Warranty voided if internal coolant tools are used without coolant and coolant filtration. Exceeding specified maximum cutting tool sizes voids warranty.

© Velocity Products • Specifications subject to change without notice • Velocity-Okuma Multus U3000/U4000 12.2018.18